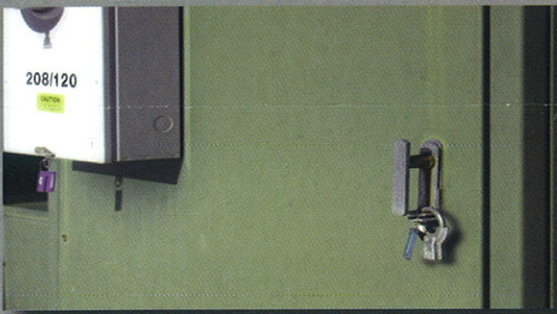


# STERLING

## SECURITY SYSTEMS

A DIVISION OF ENGINEERING UNLIMITED

ECONOMICAL SECURITY SINCE 1919  
REVENUE & LIABILITY PROTECTION FOR UTILITIES  
MADE IN THE USA



## STERLING SECURITY SYSTEMS

A Division of Engineering Unlimited

1320 12th Avenue North      Minneapolis, MN 55411-4063

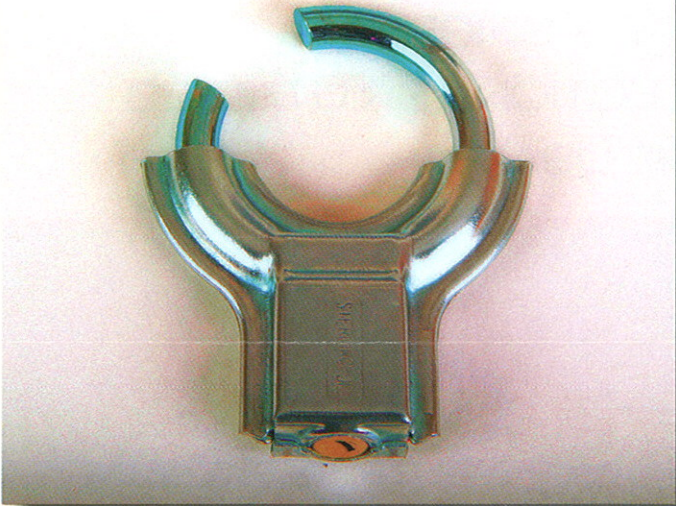
tel 800-515-4040      fax 800-515-2829

tel 612-522-4040      fax 612-522-2829

[www.sterlingpadlocks.com](http://www.sterlingpadlocks.com)    [eui@engunl.com](mailto:eui@engunl.com)



# KEYED PADLOCKS



## JUNIOR

shackle diameter: 1/4" (6.4mm)  
outer diameter: 1-13/16" (46.0mm)  
shackle gap: 19/32" (15.1mm)



## SENIOR BRASS

shackle diameter: 5/16" (7.9mm)  
outer diameter: 2-3/8" (60.3mm)  
shackle gap: 43/64" (17.1mm)

**Zinc Plated Steel Locks Are Standard** - Formed Steel.  
Zinc plated throughout for corrosion and weather resistance.

**Keyed-Alike Padlocks Are Standard** - Keys are a  
separate line item for ordering.

**Reserved Key Numbers** - Available for larger orders.

**Key Numbers On File For Customer Convenience** -  
We keep track of your key number so you can reorder keys  
and locks to match those already in your system.

**Keyed Differently or Mastered Keyed Padlocks** -  
Each lock has its own key. Two keys supplied with each lock.  
Master keyed locks can be opened with one master key.

**MADE IN THE USA**



1320 12th Avenue N Minneapolis, MN 55411-4063  
tel 800-515-4040 fax 800-515-2829  
tel 612-522-4040 fax 612-522-2829  
www.sterlingpadlocks.com eui@engunl.com

**Brass** - All parts solid brass. Constructed specifically for  
areas of high humidity, moisture and airborne contaminants.

### Other Options:

**Case Hardened Shackle** - Steel shackles heat treated  
for superior resistance to sawing and bending.

**Color Coding With Shrink Tubing** - Red, blue, green,  
yellow, black, and white vinyl. For identification,  
account status, lockouts, etc.

**9" Mounting Chain Attached To Lock** -  
Prevents misplaced locks for padlocks in a  
permanent location such as fence gates, sheds.

### KEYS:

Order  
Separately

Specify key  
number and/or  
end user.





# ONE-SHOT SEALS



## JUNIOR ONE-SHOT

shackle diameter: 1/4" (6.4mm)  
outer diameter: 1-13/16" (46.0mm)  
shackle gap: 19/32" (15.1mm)



## SENIOR ONE-SHOT

shackle diameter: 5/16" (7.9mm)  
outer diameter: 2-3/8" (60.3mm)  
shackle gap: 43/64" (17.1mm)

### Optional Plastic Cap on Junior Size

#### Advantages Over Other Seals:

- Speedy, no-tools installation
  - Competitive cost
- Durable and unaffected by cold or heat
- Steel construction for extra security
  - Tamper evident
- Weather and corrosion resistant
- Secure, tool needed for removal
  - Environment friendly
  - Contains no lead
- Can be serialized/customized

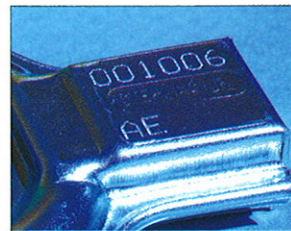
**MADE IN THE USA**



1320 12th Avenue N Minneapolis, MN 55411-4063  
tel 800-515-4040 fax 800-515-2829  
tel 612-522-4040 fax 612-522-2829  
www.sterlingpadlocks.com eui@engunl.com

### Applications:

- Meter socket sealing rings
- Pad mounted utility equipment
  - Cable boxes
- Cargo containers
  - Truck trailers
  - Railroad cars



- For serializing/customizing call factory

### Clip

- Use with Ekstrom meter ring and Sterling One-Shot seal or padlock

